

AUTOMATIC ABOVE-GROUND COVER



moove'O

TECHNICAL INSTRUCTIONS

Installation / Use / Cleaning / Maintenance / Safety advice

FIJA Group



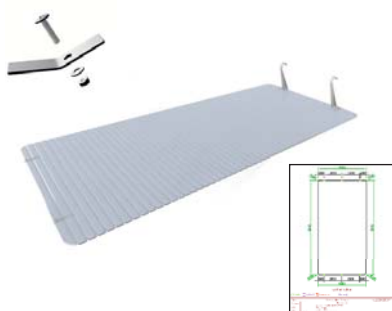
**NOTICE TO BE GIVEN TO THE USER AFTER INSTALLATION IS COMPLETE
PLEASE READ CAREFULLY AND KEEP IN A SAFE PLACE.**

DELIVERED PARTS



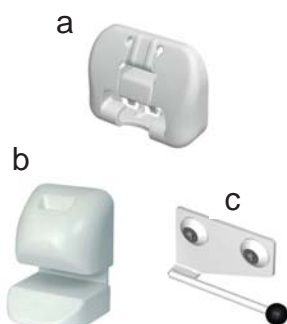
- The motor (compliant with electric standards) is located in the tube and can be accessed from the terminal.
- Adjustment of the "mechanical automatic stop" locking the cover in place once it has been fully unrolled or rolled, is done directly on the motor.

2



Slats:

- The cover itself is made from unleaded PVC slats (*this material conforms to anti-ageing requirements as defined in the NF T 54 405-1 Standard*), they are watertight and hinged and will float on the surface of the water.
- The gap between the side and the cover must be ≤ 70 mm.
- The cover is connected to the tube using white straps that are attached to the first slat of the cover.
- There are fixture straps at the start and end of the cover used to fix the cover to the fastening kit fixed to the side of the pool.



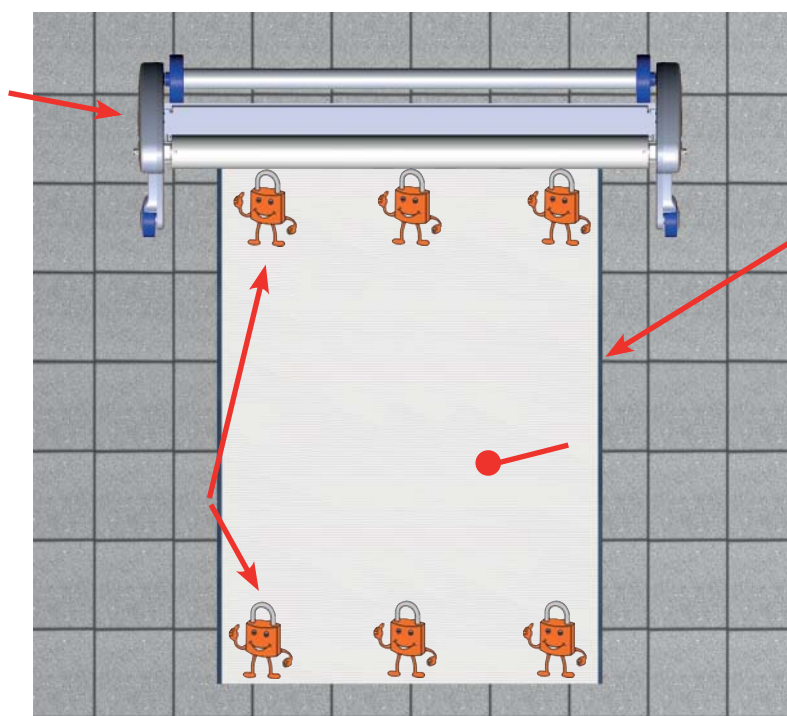
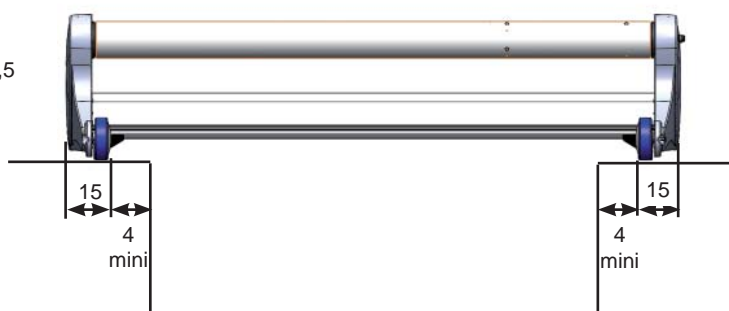
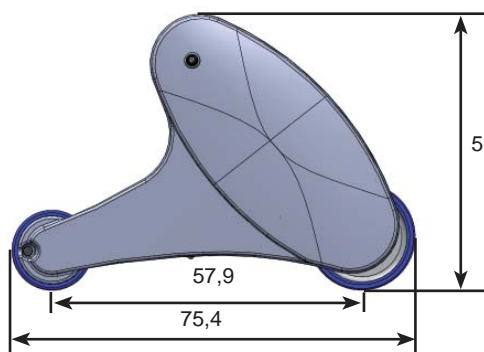
Fastening kits:

3 models: (a - Push-lock / b - Quick-lock / c - Straplock)
3 fixture modes: (surface mount – insert mount – hanging mount)

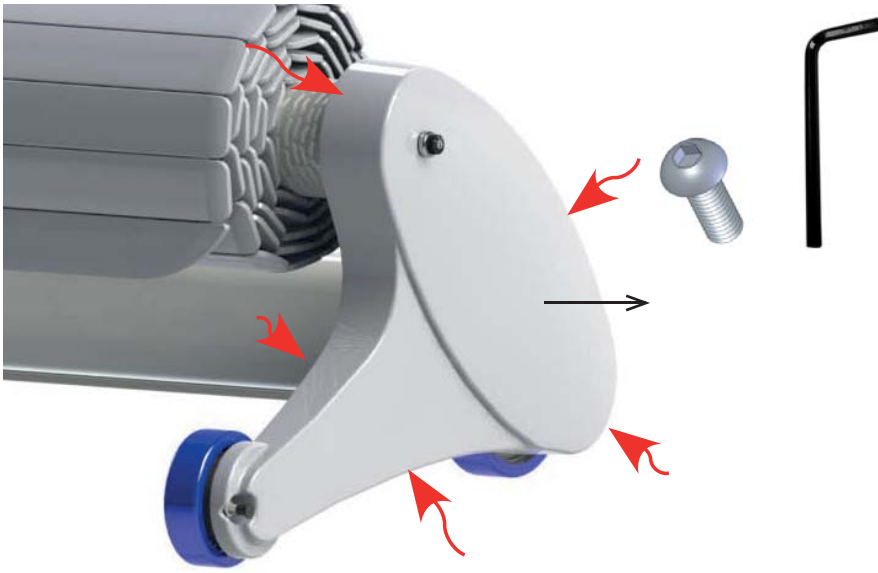
- The fastening kits are positioned on each width of the pool.
(the number varies depending on the pool configuration)
- These fastening systems are triggered by a tool or a double action.

PACKING LIST

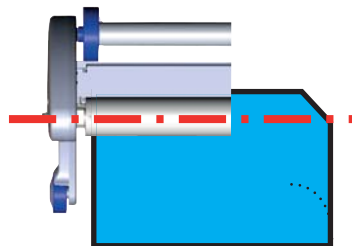
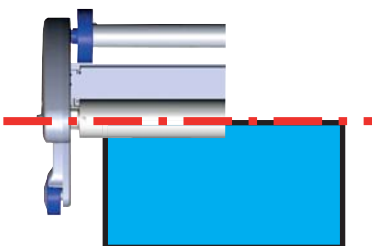
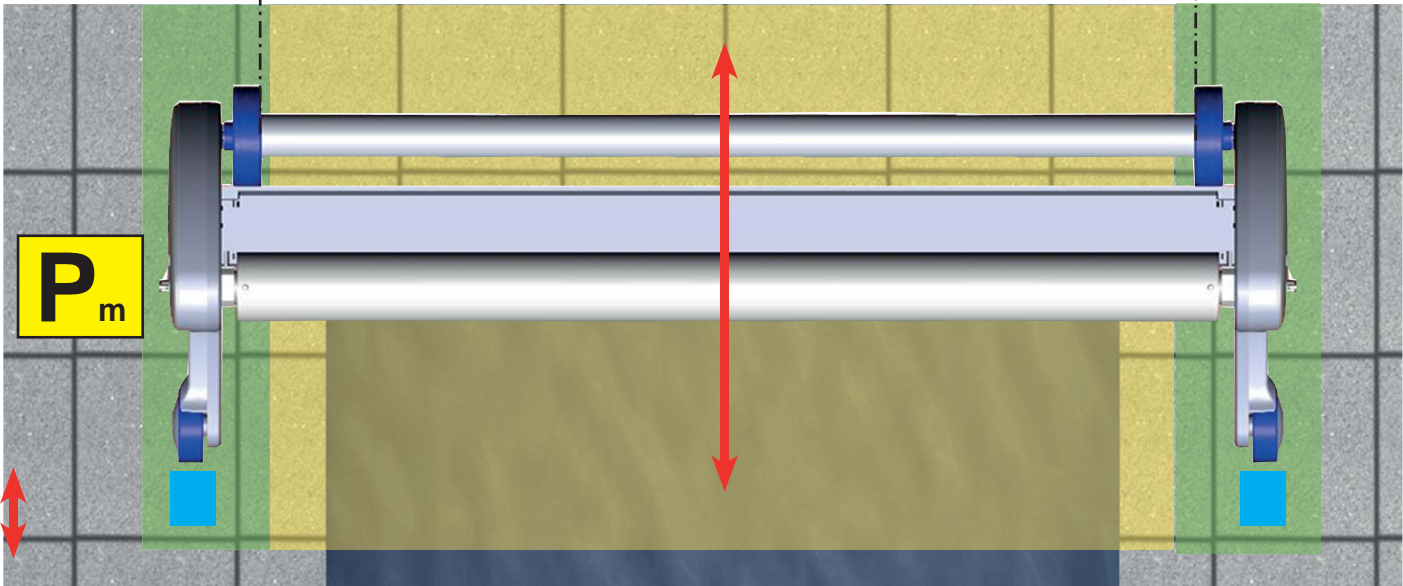
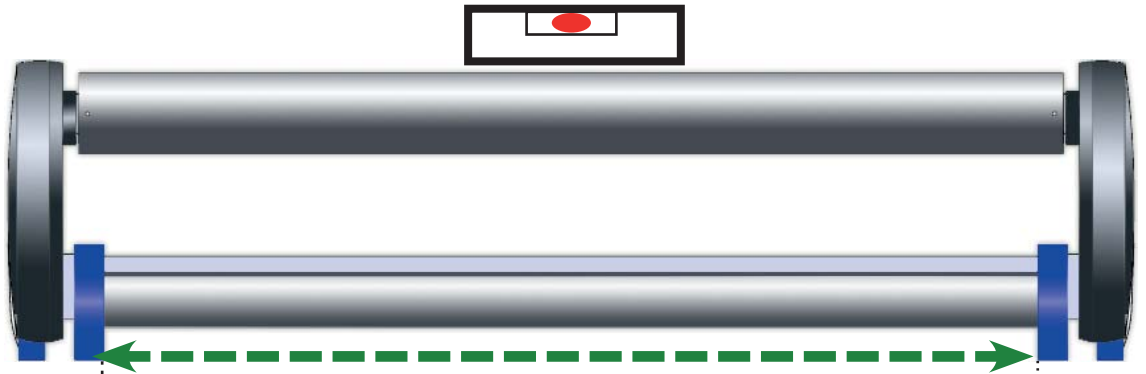


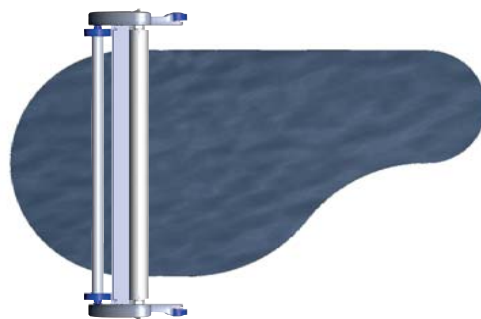
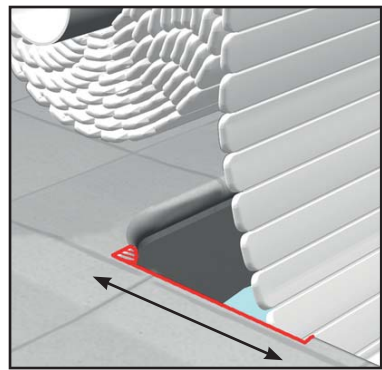


At the time of publication, covers with an overlap and covers with removable steps on the side are not compliant with standard NF P 90-308.
Unless otherwise specified by the manufacturer, immersion alarms are not compatible with DEL automatic covers.

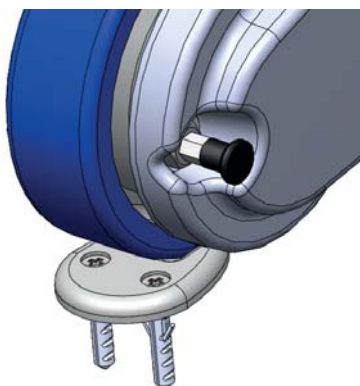
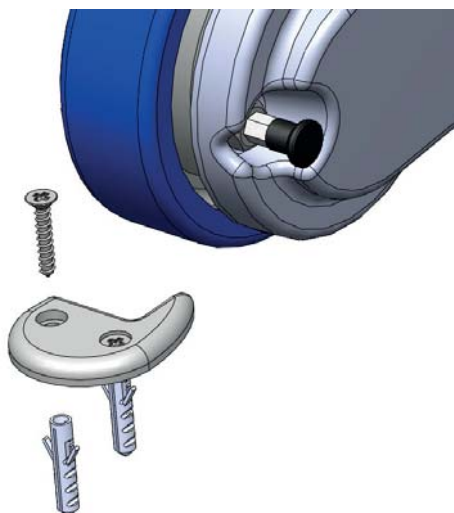


4



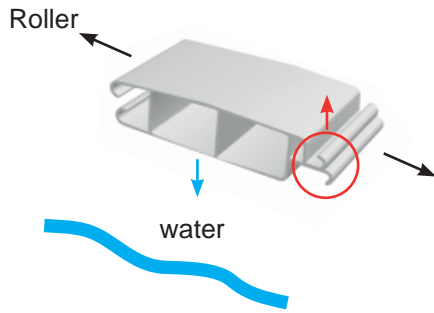


P_m

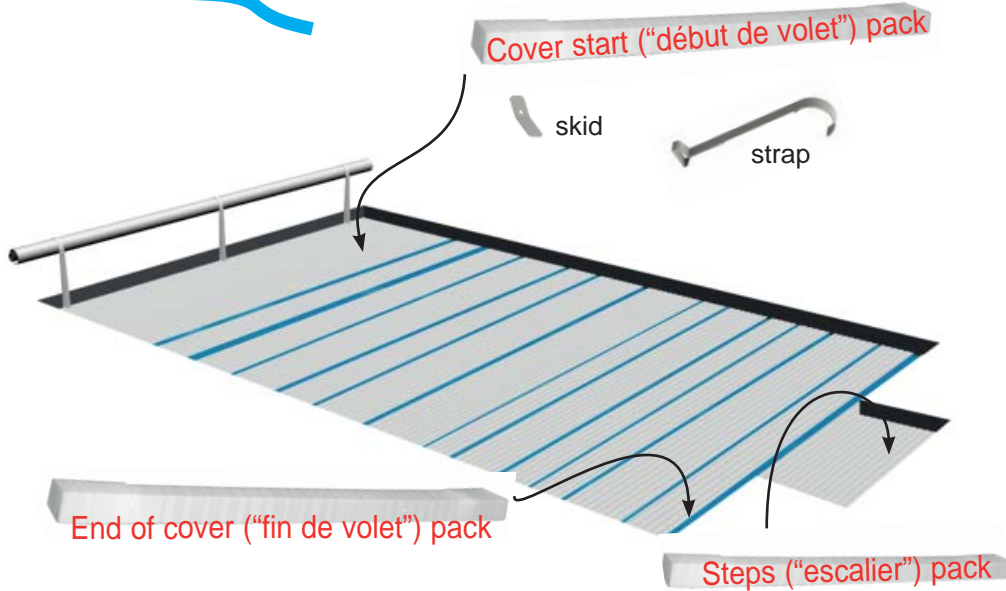
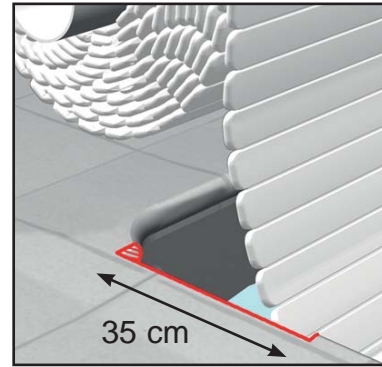


COVER INSTALLATION

Make sure the slats are in the right direction

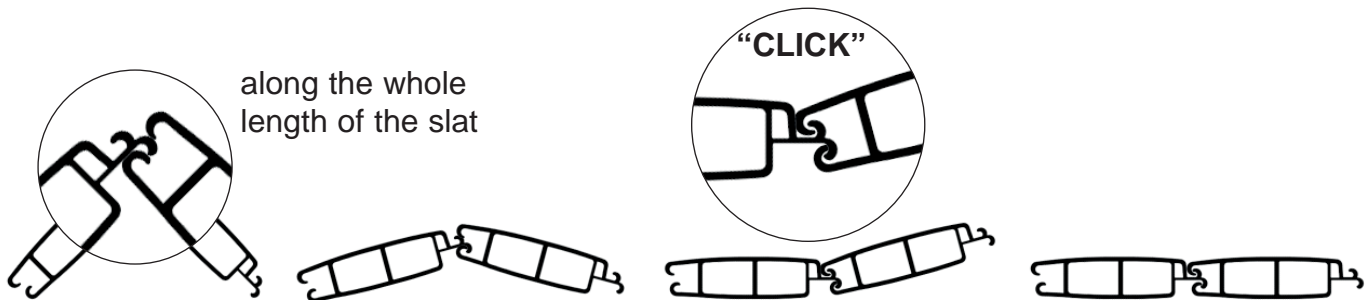


If necessary, cut the sides to ease the passage of the cover and avoid rubbing



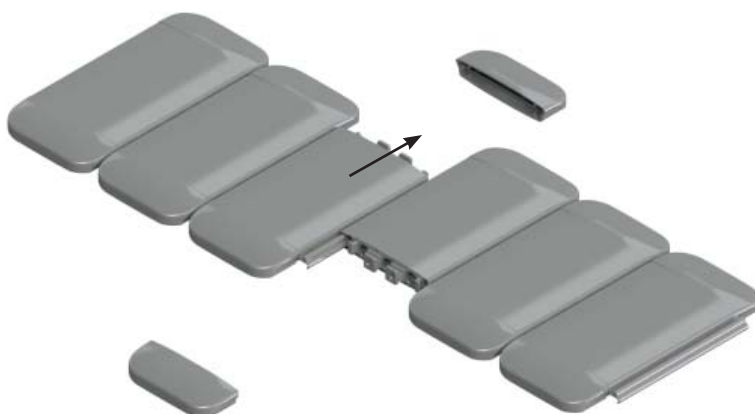
Slat assembly

By clipping

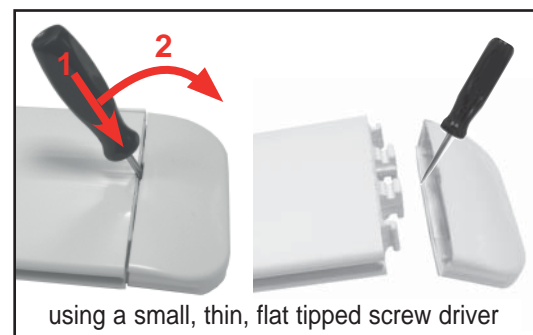


Repeat the movement until all the slats are completely clipped together

By sliding



remove the cap

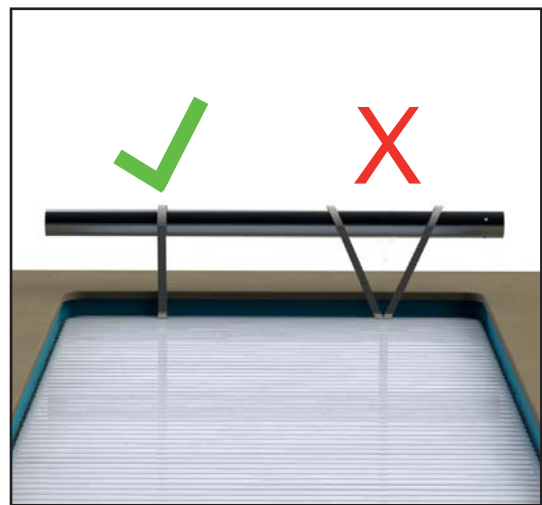
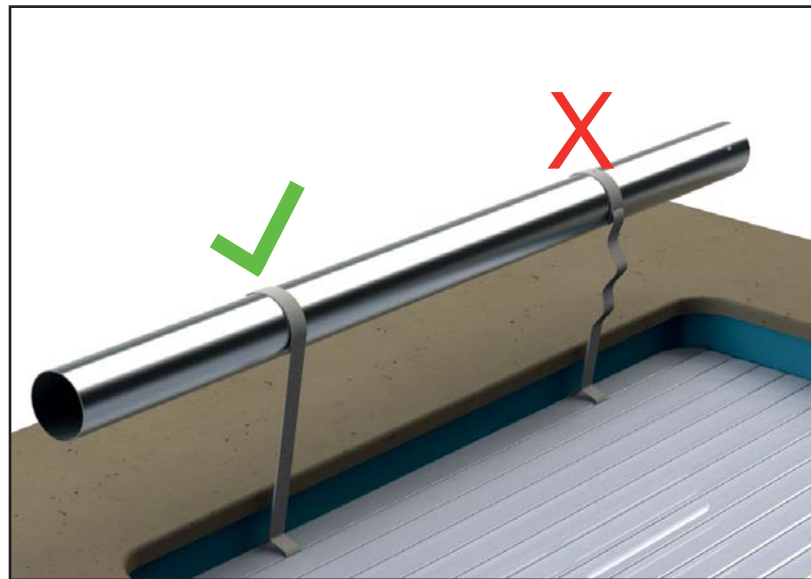


using a small, thin, flat tipped screw driver

Assembly of the strap between the cover and the tube



The surface to be glued must be clean and dry

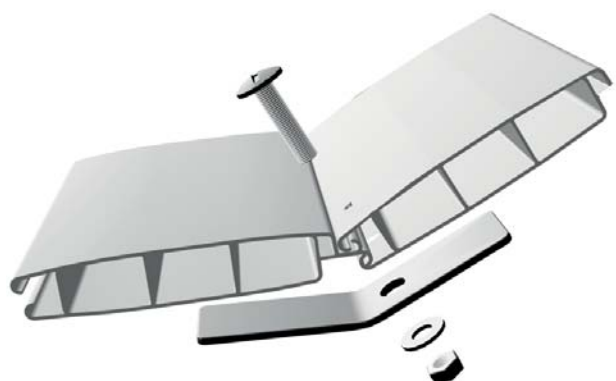
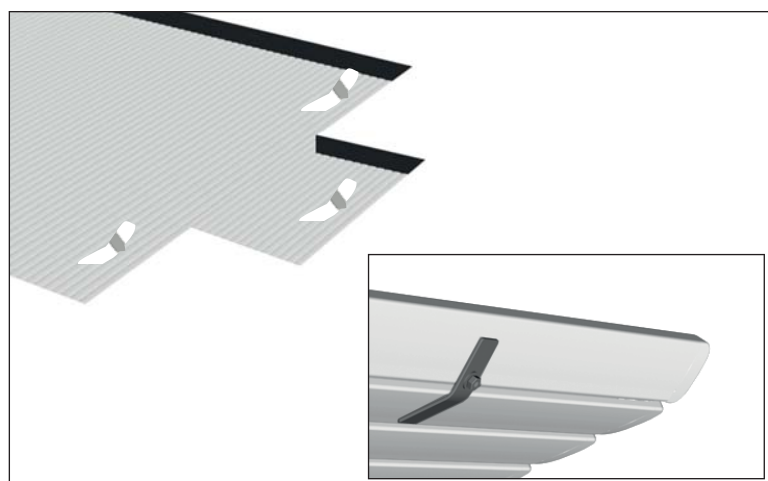


In order to guarantee quality fixing, the adhesive Velcro temperature must be higher than 15°C (if necessary leave it in a warm room before application).

skid assembly

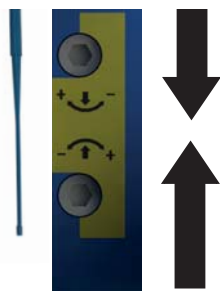


The skids are used to orient the cover at the start of closure.
The holes are drilled at the factory.



ADJUST THE AUTOMATIC STOPS

Adjustment



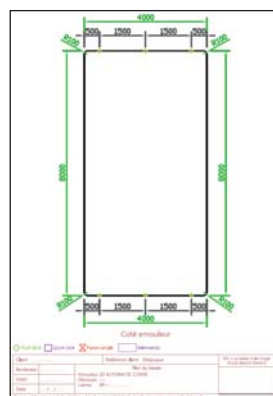
The arrows indicate the cover's direction of movement

Turning in the +, direction will increase the extension of the cover

Turning in the -, direction will reduce the extension of the cover

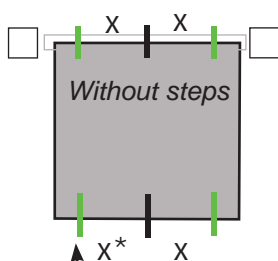
LOCKING KITS

The position of the fastener kits on the cover is indicated on the drawings shipped with the slats.

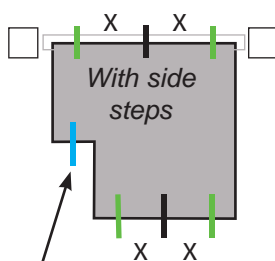


All changes to the positioning of the kits must comply with the rules given below. For other cases please contact us.

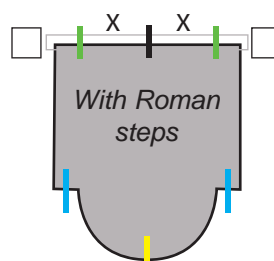
Positioning rules



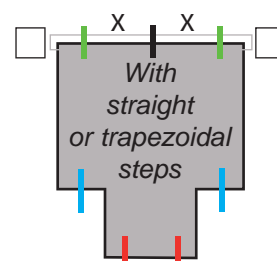
kit at max. 50 cm from the edge



1 kit centred if < 1 m
1 kit at 50 cm from the edge if < 2 m
2 kits if > 2 m



kit at the end of the steps Roman



2 kits at max. 50 cm from the edge



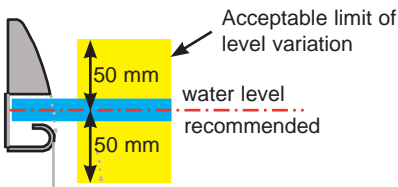
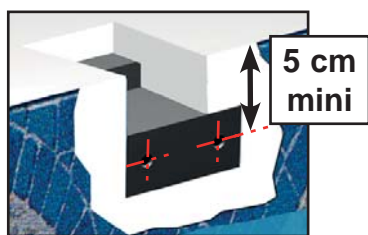
* X must never exceed 2 m

The Quick-lock fastener system cannot be used on cut off corners and curves, except at the end of Roman steps.

A water level regulator is mandatory

Insert mounted model

For concrete and panel pools



VBA TF Z pozi stainless steel A4 Ø6 x 60 wood screw

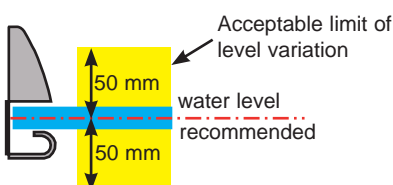
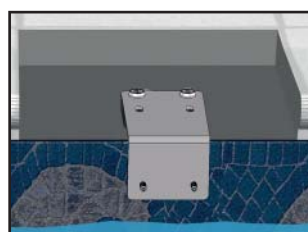
Hollow white Ø16 washer

Inserted part

Screw cap

Hang mounted version

For concrete and panel pools



Ø12

VBA TF Z pozi stainless steel A4 Ø6 x 60 wood screw

Hang mount support

Hollow white Ø16 washer

INOX M6 washer

Stainless steel nut A4 M10

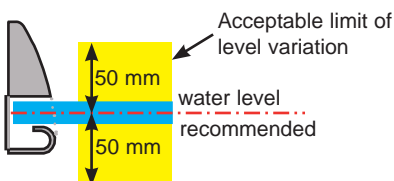
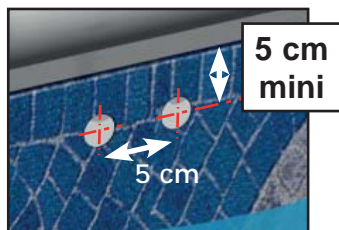
Screw cap

Cale 13 mm

Ø12 Nylon plug

Surface mounted model

For concrete and concrete block pools, as well as pools with wall thickness greater than or equal to 8 mm



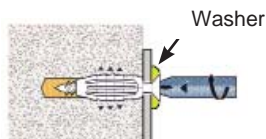
VBA TF Z pozi stainless steel A4 Ø6 x 60 wood screw

Hollow white Ø16 washer

Universal 8 x 40 plug

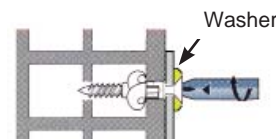
Screw cap

Concrete

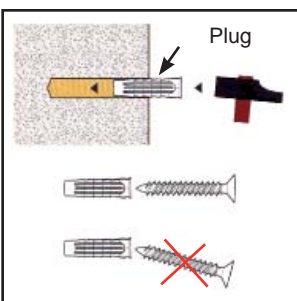


Once the resistance point has been reached stop screwing, this would deteriorate the fixture quality.

Concrete block



After reaching the resistance point, make 3 more turns of the screwdriver to finish tightening.

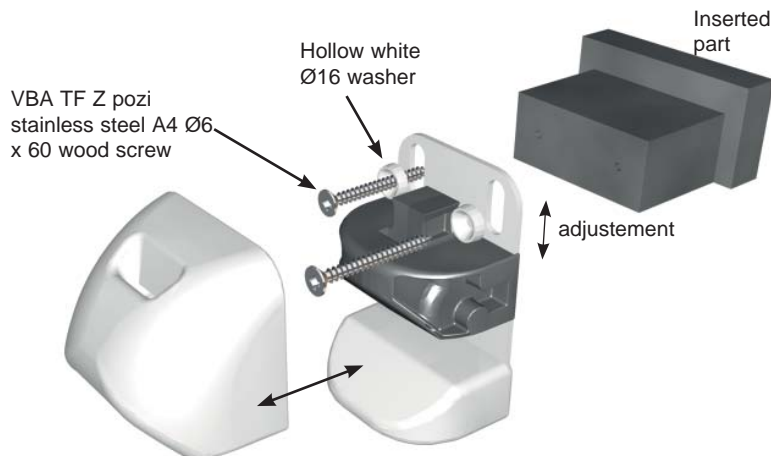
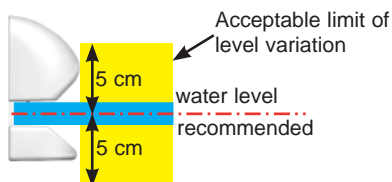
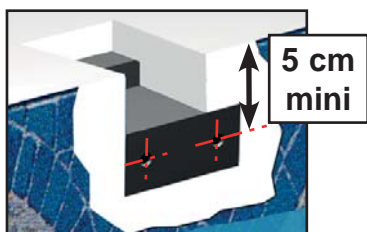


INSTALLATION QUICK-LOCK

A water level regulator is mandatory

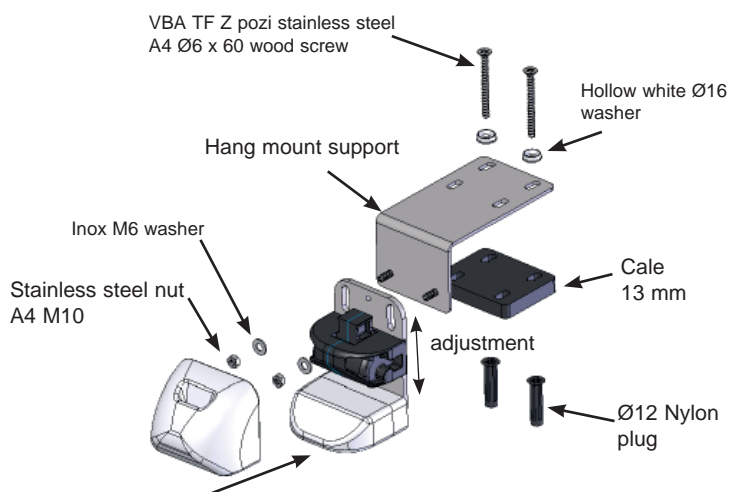
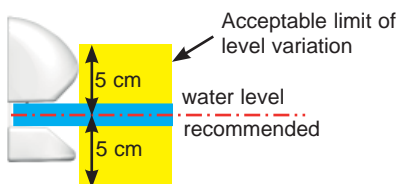
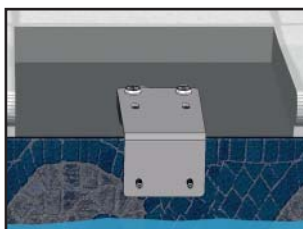
Insert mounted model

For concrete and panel pools



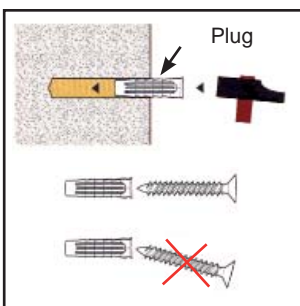
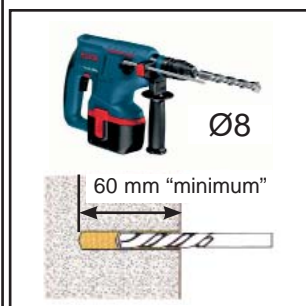
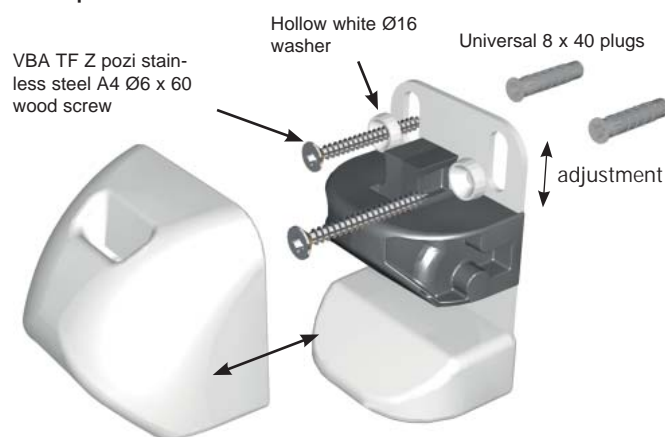
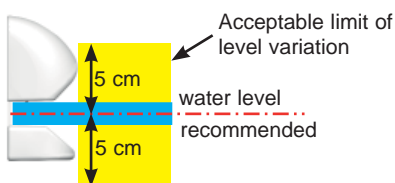
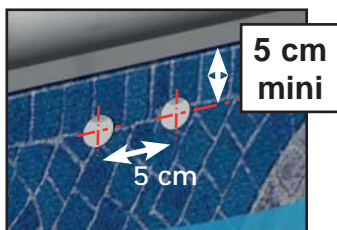
Hang mounted version

For concrete and panel pools

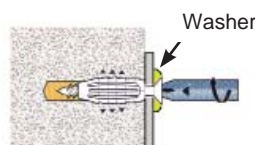


Surface mounted model

For concrete and concrete block pools, as well as pools with wall thickness greater than or equal to 8 mm

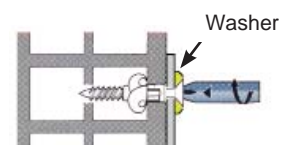


Concrete



Once the resistance point has been reached stop screwing, this would deteriorate the fixture quality.

Concrete block

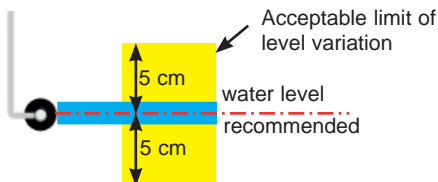
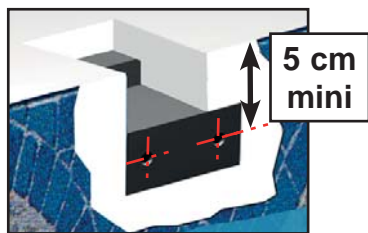


After reaching the resistance point, make 3 more turns of the screwdriver to finish tightening.

A water level regulator is mandatory

Insert mounted model

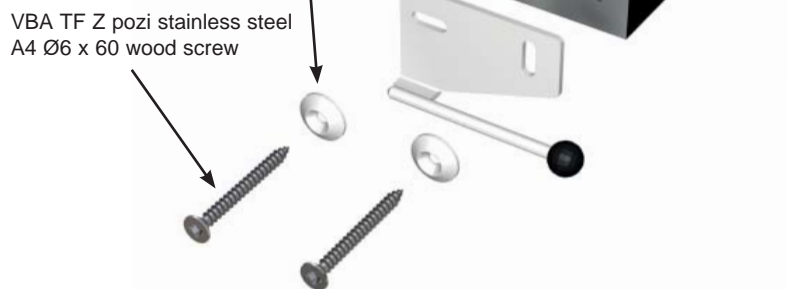
For concrete and panel pools



VBA TF Z pozi stainless steel A4 Ø6 x 60 wood screw

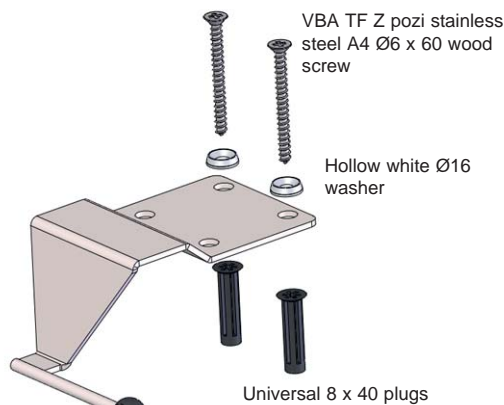
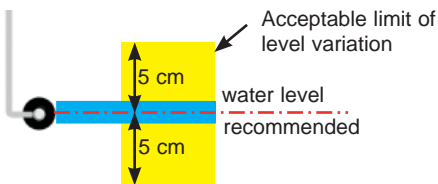
Hollow white Ø16 washer

Inserted part



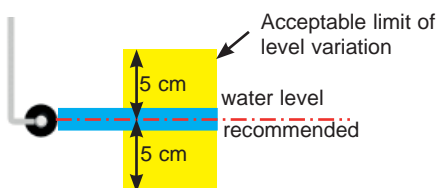
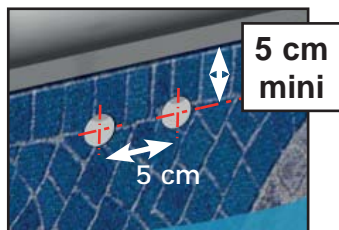
Hang mounted version

For concrete and panel pools



Surface mounted model

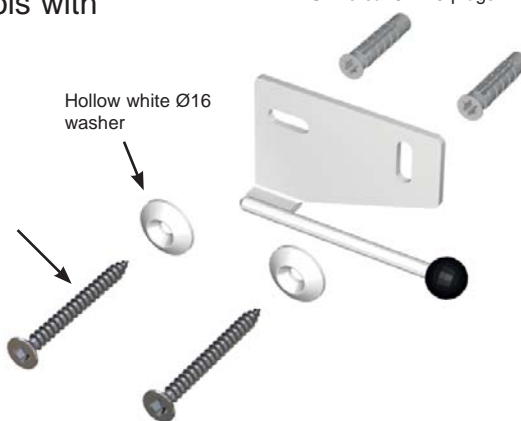
For concrete and concrete block pools, as well as pools with wall thickness greater than or equal to 8 mm



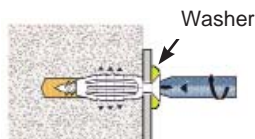
VBA TF Z pozi stainless steel A4 Ø6 x 60 wood screw

Hollow white Ø16 washer

Universal 8 x 40 plugs

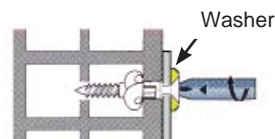


Concrete



Once the resistance point has been reached stop screwing, this would deteriorate the fixture quality.

Concrete block



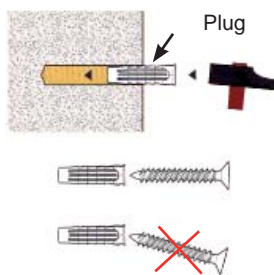
After reaching the resistance point, make 3 more turns of the screwdriver to finish tightening.



Ø8

60 mm "minimum"

Plug



INSTALLATION OF THE STRAP-HOLDER ANCHOR EYEBOLT

Eyebolt for concrete beach

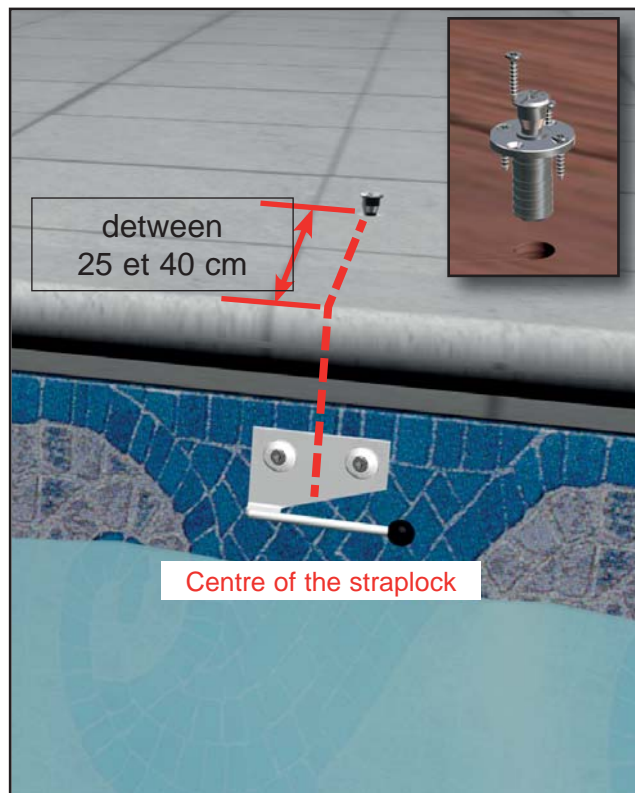


The head of the eyebolt must be higher than the beach surface



Do not force the eyebolt into a drill hole of a smaller diameter than this

Eyebolt for wooden beach



INSTALLATION OF THE STRAPLOCK STRAP

single strap



double strap



or

+

+

+

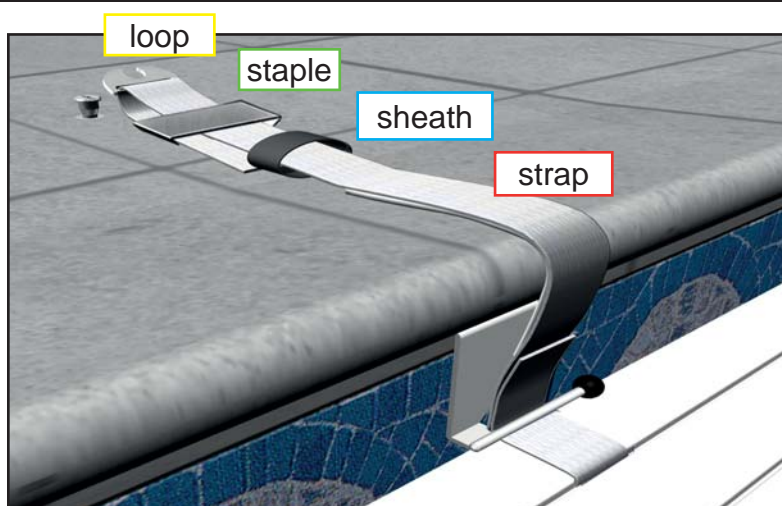
Protective sheath



loop

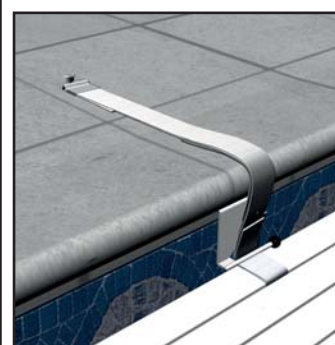
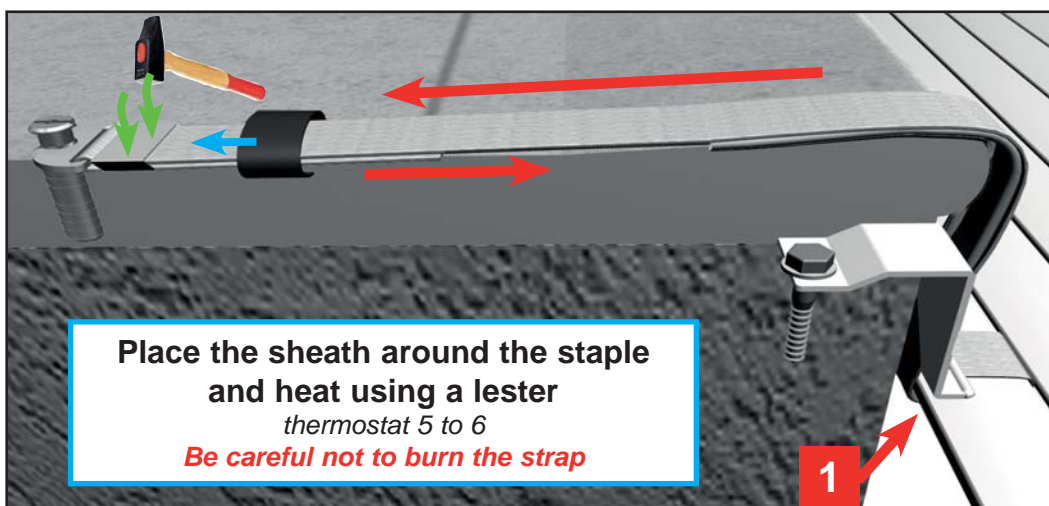


staple



Stretch the strap
the cover must touch the underside of the straplock

Place the strap in position after the loop and crimp
the 2 strap thicknesses pass inside the stable



OPENING/ CLOSURE OF THE POOL

- The person carrying out the operations must first make sure there are no bathers in the pool.
- It is imperative not to halt the cover in an intermediate position, this can cause the risk of jamming a bather's body under the cover casing, if a bather uses the pool.
- When using an automatic cleaner under the cover, check that the hose does not affect the movement of the slats when opening and closing the cover.
- It is essential to remove floating objects when opening and closing the cover.
- Do not block the cover while extending or retracting.
- Do not activate the automatic cover when it is iced in.
- The cover can be opened and closed by one person. (3 minutes)

Opening: **Always release the cover before starting the motor.**

- Unlock all the fastening systems.
- Operate the open control.
- Stow the unlocking tools out of the reach of children.

14



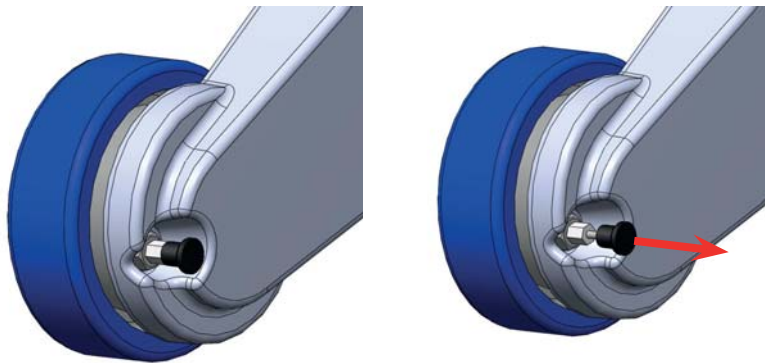
Closure:

- Operate the «contact maintained during closure» close control
- Lock all the fastener systems.
- Stow the unlocking tools out of the reach of children.

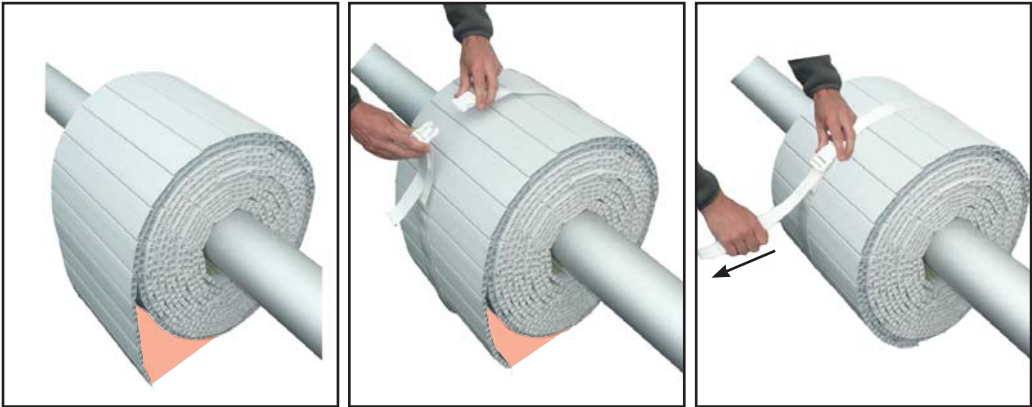


**ALWAYS KEEP AN EYE ON THE POOL DURING OPENING OR CLOSING OPERATIONS.
ALWAYS CHECK THAT THE POOL WATER LEVEL IS CONSTANT AND COMPLIANT WITH
THE RECOMMENDATIONS ON THE INSTRUCTIONS**

Using the brake



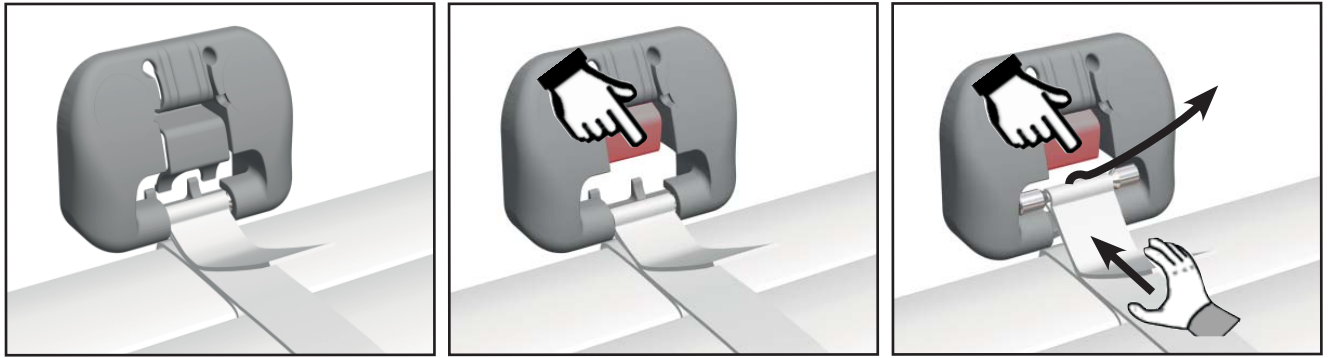
SUPPORT STRAP WITH CLIPS FOR COVER



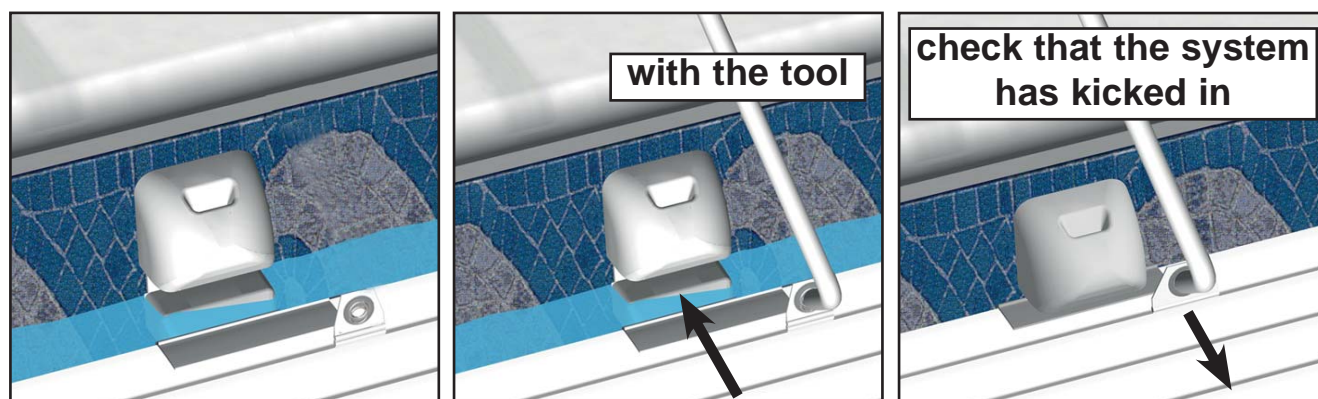
Locking



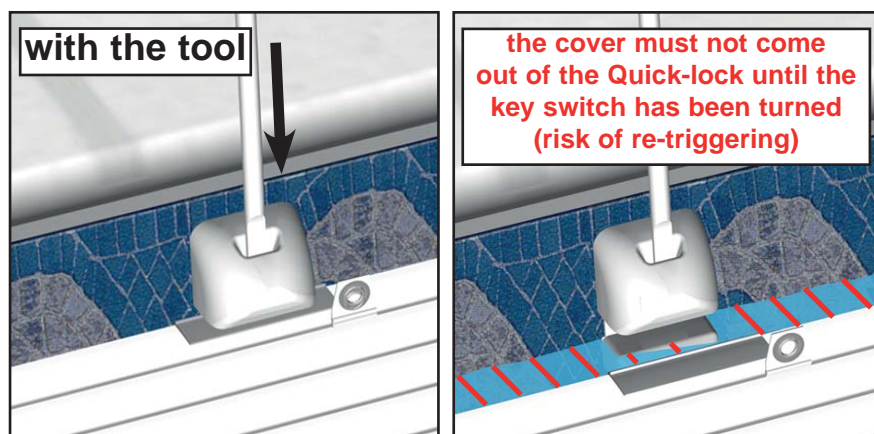
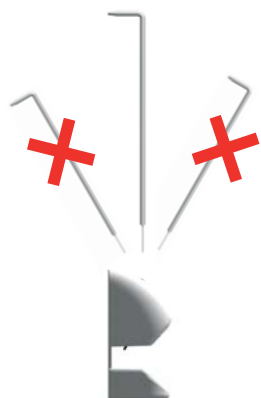
Releasing



Locking

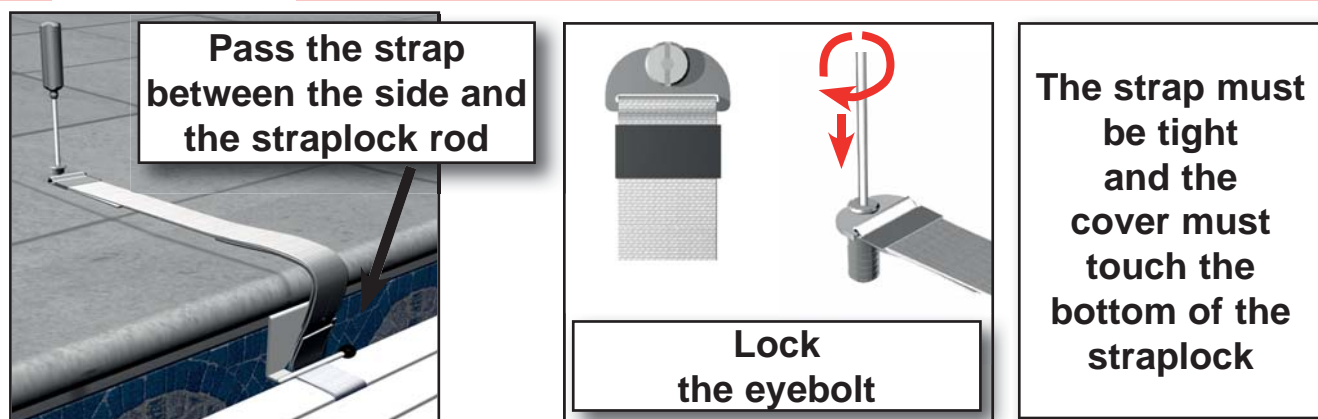


Releasing

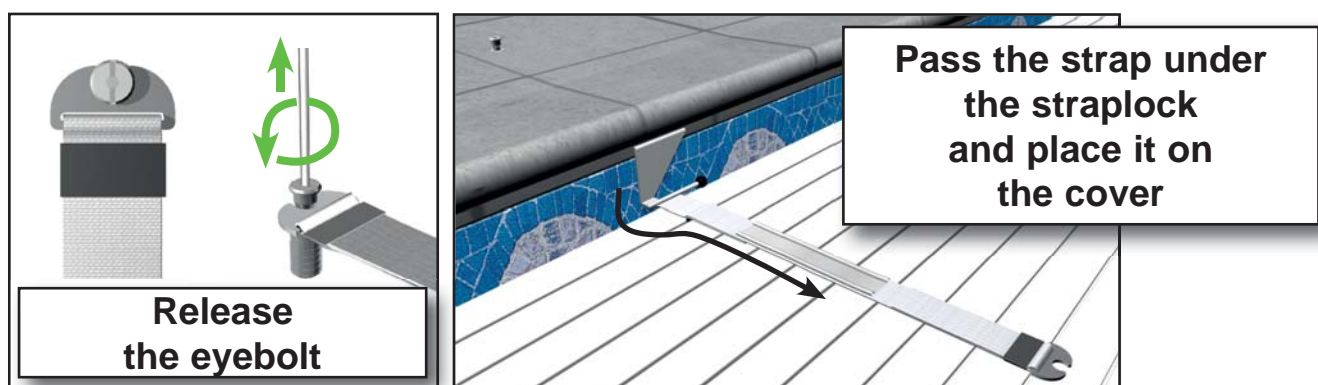


LOCKING AND RELEASING THE STRAPLOCK

Locking



Releasing



POOL WATER LEVEL

- To ensure optimum safety and the correct operation of the roller, always check that the level of the water in the pool remains constant and compliant with the manufacturer's recommendations.
(For further comfort, use an overflow and a level regulator).
- When the level is too high it is caused by the overflow being blocked by leaves or other debris.
- If the water level is too low there is a risk of jamming.
- If there are gutters or hand rails, the pool must be equipped with a water level regulator.

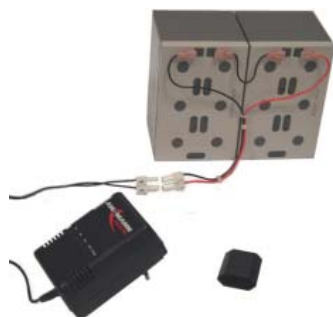
FILTERING

- Programme filtering during sunlight periods and operate it permanently as soon as the water reaches 25°C.

CLEANING (USER'S RESPONSIBILITY)

- Clean your cover fully twice a year (start of season and wintering). This is even more important if you have hard water. To do this, use a high pressure cleaner with warm water and a descaling product (Décalcit super).
- Also take care to regularly clean the fastening systems and especially the eyebolt so that it never jams. We recommend lubricating the eyebolts every year for optimum operation.
- It is advisable to inspect the whole system, in the event of abnormal strain on the cover (eg. somebody falling)
- Check the straps annually
- To obtain the best performance from the solar panels, regularly clean them using a window cleaning product.

BATTERIES



AT THE FIRST SIGN OF WEAKNESS, RECHARGE THE BATTERIES.

NEVER COMPLETELY RUN DOWN THE BATTERIES

Connect the batteries to the charger (*be careful of the polarity*). Plug in the charger. It will turn on automatically at the suitable voltage and the charging process starts. The red LED indicates charging. When charging is complete, the red LED turns off and the batteries are supplied using a maintenance charge. (see charger notice)

Warning: - Keep the charger in a dry place. Never recharge close to the pool, do this in a dry place.

WINTERING

- Winter the pool depending on its geographic location.
- Close the cover in the safety position.
- Leave the batteries connected inside the roller and do not cover the solar panel.

MAINTENANCE

- All work must be carried out by a professional who will contact the manufacturer if necessary.
- All spare parts must be original or compliant with the standard.
- Inspect the whole cover for damage/wear and tear.
- At the beginning of each season and in the event of an accident (fall, hail on the cover, abnormal strain on the cover, etc.) check that the slats have no visible signs of deterioration that could prevent the safe operation of the cover (cracked, pierced or bent slats, etc.). Change the slats or the whole cover if necessary.
- In both summer and winter, do not cover the slats with an opaque cover. There is a risk of damage due to excess heat.
- Check the condition of the straps (seams) and especially wear on the anti-abrasion sheath. If the latter no longer fulfils its protective function from friction of the strap against the pool side, replace it.



DEAR CUSTOMERS,

THANK YOU FOR CHOOSING A DEL AUTOMATIC COVER.

PLEASE READ THE INSTRUCTIONS BELOW CAREFULLY.

• POOLS CAN BE A SERIOUS DANGER FOR CHILDREN. DROWNING CAN HAPPEN QUICKLY.

S A F E T Y A D V I C E

WHEN CHILDREN ARE AROUND THE POOL THIS REQUIRES YOUR CONSTANT VIGILANCE AND ACTIVE SUPERVISION, EVEN IF THEY CAN SWIM.

THE PHYSICAL PRESENCE OF A RESPONSIBLE ADULT IS ESSENTIAL WHEN THE POOL IS OPEN.

LEARN LIFE SAVING TECHNIQUES.

MÉMORISER ET AFFICHER PRÈS DE LA PISCINE LES NUMÉROS DES PREMIERS SECOURS.

- POMPIERS : 18 (POUR LA FRANCE) OU 112 DEPUIS UN TÉLÉPHONE PORTABLE
- SAMU : 15 (POUR LA FRANCE)
- CENTRE ANTIPOISON :

• THIS COVER IS NOT A SUBSTITUTE FOR COMMON SENSE NOR FOR PERSONAL LIABILITY. THE PURPOSE OF THIS COVER IS NOT TO REPLACE THE VIGILANCE OF PARENTS AND/OR RESPONSIBLE ADULTS WHICH REMAIN THE ESSENTIAL FACTORS FOR THE SAFETY OF YOUNG CHILDREN.

• BE AWARE THAT SAFETY IS ONLY ACHIEVED BY A CLOSED COVER THAT IS LOCKED AND CORRECTLY INSTALLED IN COMPLIANCE WITH THE MANUFACTURER'S INSTRUCTIONS.

• COMPLY WITH THE WATER HEIGHTS DEFINED BY THE MANUFACTURER.

• THE COVER MUST SYSTEMATICALLY BE CLOSED DURING ALL ABSENCES FROM HOME, HOWEVER SHORT.

• MAKE SURE THERE ARE NO BATHERS OR FOREIGN BODIES IN THE POOL BEFORE AND DURING CLOSING.

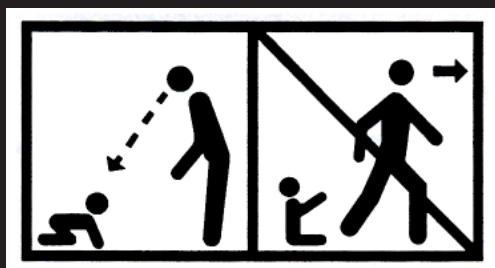
• PLACE THE TOOLS REQUIRED TO OPEN THE COVER OUT OF THE REACH OF CHILDREN (THE KEY FOR EXAMPLE)

• THE OPENING ACTION OF THE MECHANISM SHOULD ONLY BE UNDERTAKEN BY A RESPONSIBLE ADULT.

• IT IS FORBIDDEN TO CLIMB ON, WALK OR JUMP ON A SAFETY COVER.

• IF A MALFUNCTION THAT PREVENTS THE CLOSURE AND SECURING OF THE POOL IS DISCOVERED, OR IF THE EQUIPMENT OR POOL ARE TEMPORARILY UNAVAILABLE, TAKE ALL NECESSARY MEASURES TO PREVENT YOUNG CHILDREN FROM ACCESSING THE POOL UNTIL THE COVER IS COMPLETELY REPAIRED.

• A CHILD CAN DROWN IN UNDER 3 MINUTES, NO TYPES OF PROTECTIVE MEASURE CAN REPLACE SUPERVISION AND VIGILANCE BY A RESPONSIBLE ADULT.



SWIMMING POOL BUILDER

ZA La basse croix rouge 35530 Brécé - tel : + 33 (0)2 99 370 370